

Young Investors Stock Challenge 2010

User Guide

Organized By:



Supported By:



Sponsored By:



YIP Portal - Microsoft Internet Explorer

File Edit View Favorites Tools Help

Address http://10.76.32.35:3080/html/product_services/yportal.shtm

Home | Contact Us | Visit Us | About Us | OCBC Bank | Sitemap

OCBC Securities

Add to your Favourites

Login Why OCBC Securities Products & Services Market Information Research Customer Service

YOUNG INVESTORS STOCK CHALLENGE 2010

Eligibility Rules & Regulations Challenge Mechanics

Prizes Terms & Conditions FAQs

Home

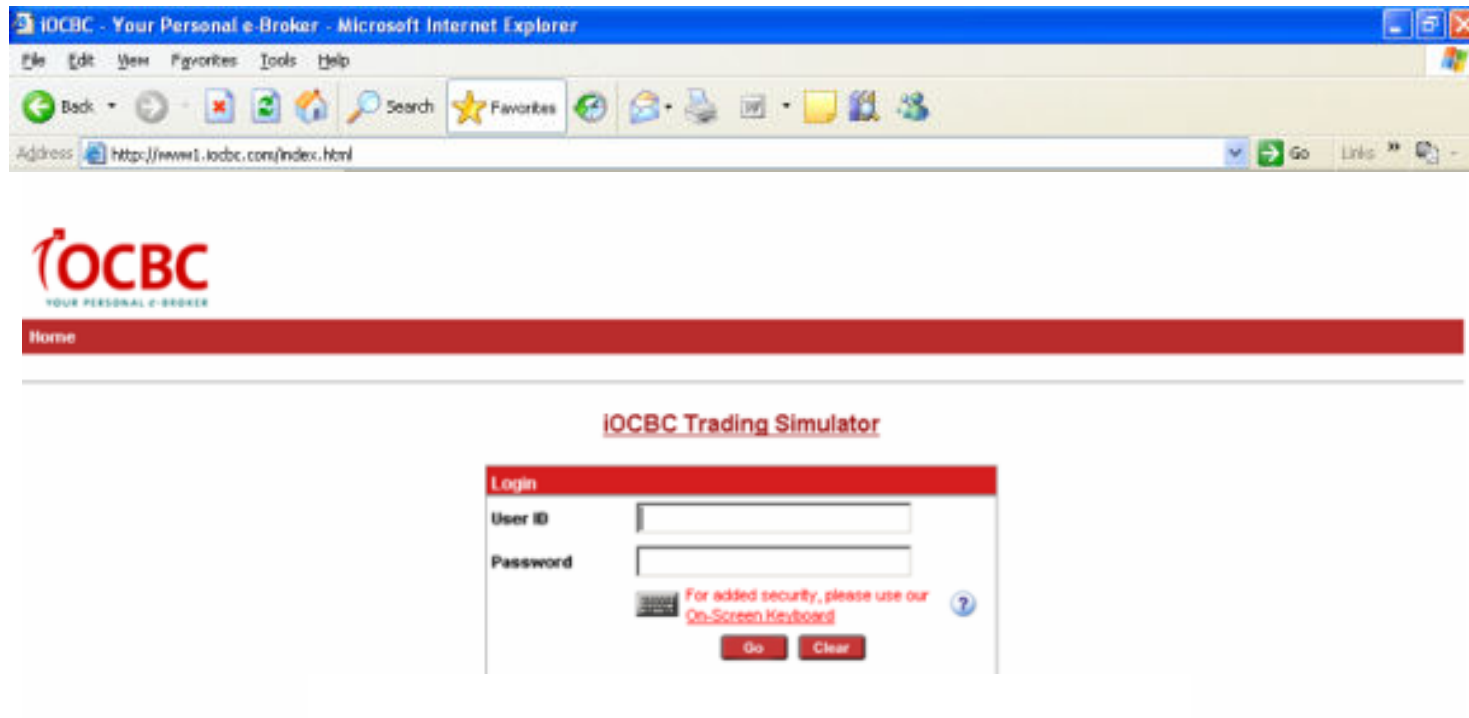
Challenge Period: 18 January 2010 - 12 February 2010 (Open to students only)

Stock Challenge

Stock Challenge Login Here >>>>>

Stock Challenge Register Here

1. Go to <http://www.iocbc.com/yip.html>
2. Click on the Login Banner



1. The login id and password will be sent to the email that you registered between 11 January and 15 January 2010. **Please ensure that the email address is valid.**
2. Enter id and password
3. Click on GO to enter the iOCBC Trading Simulator

Organized By:

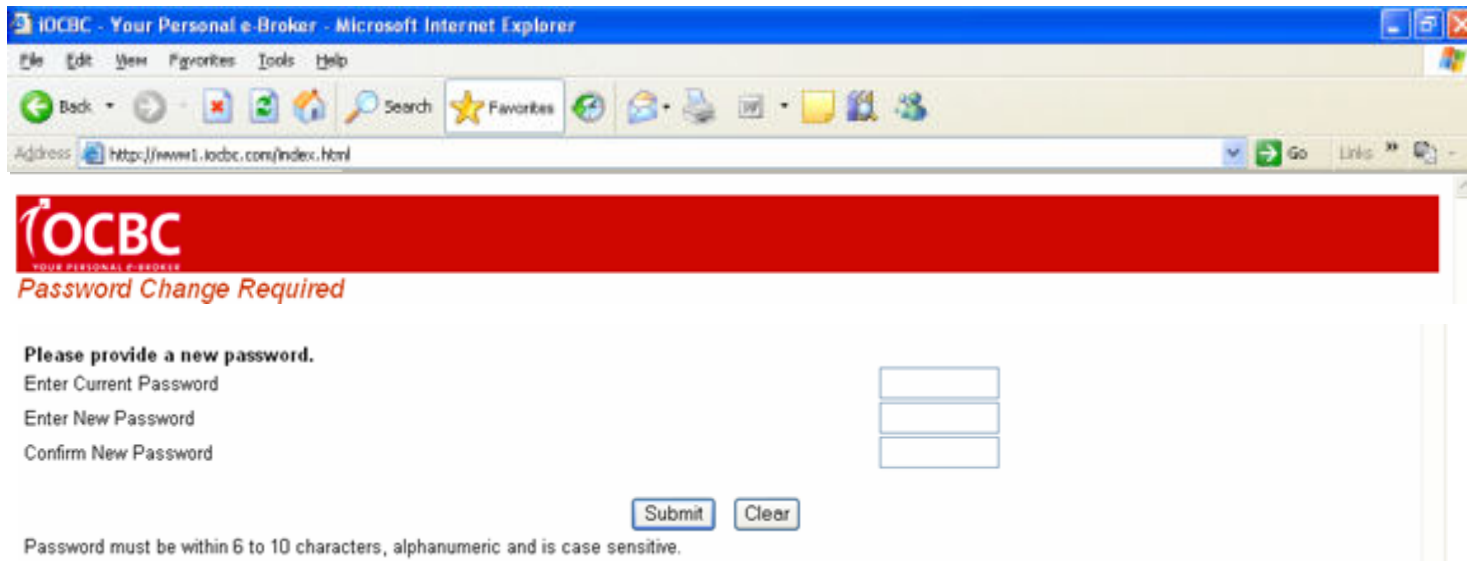


Supported By:



Sponsored By:





1. Change to your preferred password for security reasons
2. Please note on the password requirements:
 - 6 to 10 characters
 - Alphanumeric
 - Same Number or alphabet cannot be side by side (eg apple)

Organized By:

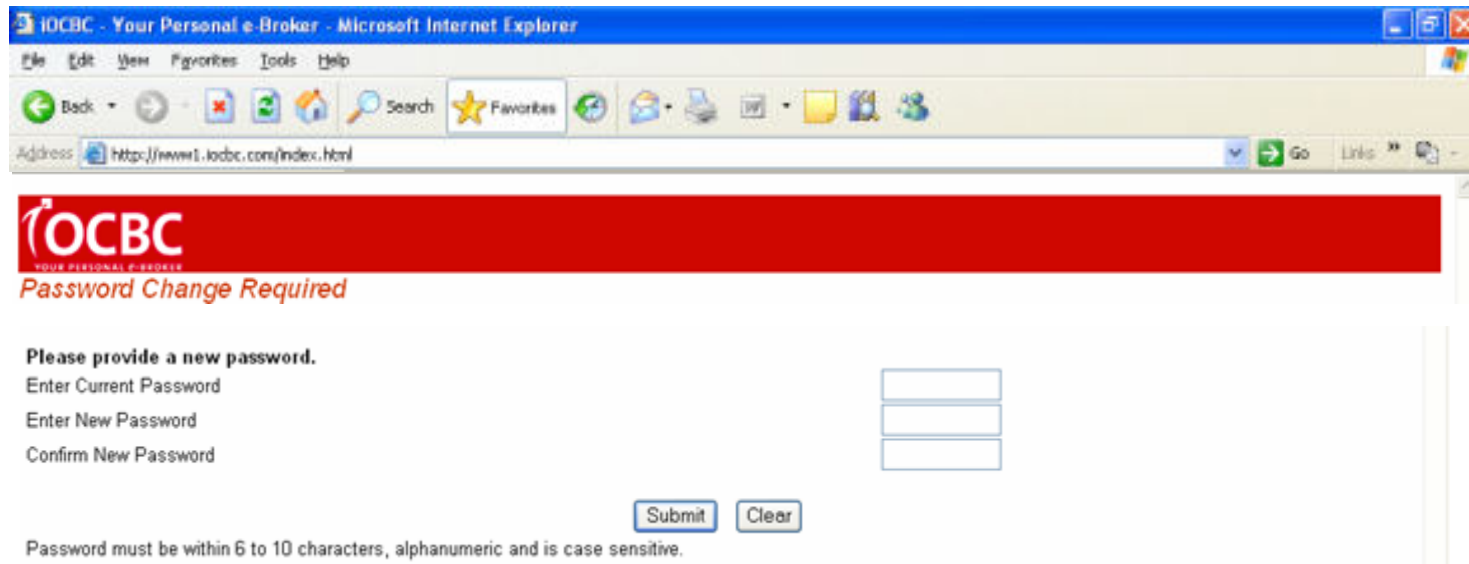


Supported By:



Sponsored By:





OCBC - Your Personal e-Broker - Microsoft Internet Explorer

Address: http://www1.ocbc.com/index.html

OCBC
YOUR PERSONAL e-BROKER

Password Change Required

Please provide a new password.

Enter Current Password

Enter New Password

Confirm New Password

Password must be within 6 to 10 characters, alphanumeric and is case sensitive.

NOTE: There will not be any reset of password. Your past trading history will be not be reinstated. Please jot down your new password upon first login.

Organized By:



Supported By:



Sponsored By:



OCBC TIME IDX: 2,796.49(-16.780) UOB CATALIST IDX: --(--)
 MSCI SGP IDX: --(--)
 Hong Kong: HANG SENG Text size: A A A Fri, 18 Dec 2009 Logout

MyPage Speed Trade Market Info Trades Portfolio Account Mgmt Share Financing IPO Calculator **Trading Simulator**

Welcome GA532364 , your last login was on 15-DEC-2009 09:08:06 AM

Announcement
 No Announcement

News
 Singapore Thailand Malaysia Indonesia Hong Kong Philippines
 No News

"Forging Ahead with Times"
It is great to know you are in control

Indices 18-Dec-2009
 .FTSTI 5 Aug 2009 7:26

STI Index	2,795.03	-18.24
FTSE Bursa KLCI	1,266.97	-2.06
Hang Seng Index	--	--
JSX Index	--	--
SET Index	--	--
PHS Composite	--	--
Dow Jones	--	--
NASDAQ	--	--
S&P 500	--	--
NYSE Composite	--	--
AMEX Composite	--	--
All Ordinaries	--	--
KOSPI Composite	--	--

Terms & Conditions | Disclaimer | Home | Contact Us | Site Map

Applet Encryptor started Internet

1. Click on Trading Simulator to start.

IOCBC - Your Personal e-Broker - Microsoft Internet Explorer

Address: http://www1.iocbc.com/index.html

ig: HANG SENG INDEX: --(--)
 MSCI HK INDEX: --(--)
 Malaysia: KLSE 2ND BOARD: --(--)
 FTSE BURSA I
 Text size: A A A
 Fri, 18 Dec 2009
 Logout

MyPage | Speed Trade | Market Info | Trades | Portfolio | Account Mgmt | Share Financing | IPO | Calculator | Trading Simulator

Buy/Sell | Portfolio | Trade History | View Ranking | Top 20 Traded Counters

A B C D E F G H I J K L M N O P Q R S T U V W X Y Z 0-9

SGX Go Refresh

Last Retrieved on Fri Dec 18 10:15:04 CST 2009 from IOCBC server

Showing records 1 to 9 of 9

Stock	Code	Rmk	Ccy	Last	\$Chng	%Chng	Vol	Buy Vol	Buy	Sell	Sell Vol	Day Hi	Day Lo	Previous
1ST SOFTWARE	I16	--	SGD	0.000	0.000	0.000	0	0	0.000	0.000	0	0.000	0.000	0.000
ACHIEVA	A02	--	SGD	0.105	0.000	0.000	599000	2817000	0.105	0.110	3246000	0.105	0.105	0.105
DBS	D05	--	SGD	14.740	23091880	14.880	-0.160	14.560	1577000	14.700	14.720	19000	12000	DBS GRP HLDGS
OCBC BK	O39	--	SGD	8.700	6675767	8.700	-0.020	8.680	769000	8.670	8.680	17000	58000	OCBC
QIANHU	552	--	SGD	0.000	0.000	0.000	0	215000	0.150	0.160	693000	0.000	0.000	0.160
SGX	S68	--	SGD	8.020	3209542	8.040	-0.040	8.000	400000	8.000	8.010	10000	12000	SGX
SIA	C6L	--	SGD	14.180	-0.100	-0.700	489000	3000	14.160	14.200	37000	14.260	14.140	14.280
SMRT	S53	--	SGD	1.830	+0.010	+0.550	432000	114000	1.820	1.830	508000	1.830	1.810	1.820
SPH	T39	--	SGD	3.560	-0.010	-0.280	632000	245000	3.550	3.560	42000	3.580	3.550	3.570

1

1. There will be 200 stocks available for trading.
2. The starting capital for each participant is SGD100,000.
3. YIP members and SIAS Associate Student members will receive SGD10,000 bonus credits

IOCBC - Your Personal e-Broker - Microsoft Internet Explorer

Address: http://www1.iocbc.com/index.html

ig: HANG SENG INDEX: --(--)
 MSCI HK INDEX: --(--)
 Malaysia: KLSE 2ND BOARD: --(--)
 FTSE BURSA I
 Text size: A A A
 Fri, 18 Dec 2009 Logout

MyPage | Speed Trade | Market Info | Trades | Portfolio | Account Mgmt | Share Financing | IPO | Calculator | Trading Simulator

Buy/Sell | Portfolio | Trade History | View Ranking | Top 20 Traded Counters

A B C D E F G H I J K L M N O P Q R S T U V W X Y Z 0-9

SGX Go Refresh

Last Retrieved on Fri Dec 18 10:15:04 CST 2009 from IOCBC server

Showing records 1 to 9 of 9

Stock	Code	Rmk	Ccy	Last	\$Chng	%Chng	Vol	Buy Vol	Buy	Sell	Sell Vol	Day Hi	Day Lo	Previous
1ST SOFTWARE	I16	--	SGD	0.000	0.000	0.000	0	0	0.000	0.000	0	0.000	0.000	0.000
ACHIEVA	A02	--	SGD	0.105	0.000	0.000	599000	2817000	0.105	0.110	3246000	0.105	0.105	0.105
DBS	D05	--	SGD	14.740	23091880	14.880	-0.160	14.560	1577000	14.700	14.720	19000	12000	DBS GRP HLDGS
OCBC BK	O39	--	SGD	8.700	6675767	8.700	-0.020	8.680	769000	8.670	8.680	17000	58000	OCBC
QIANHU	552	--	SGD	0.000	0.000	0.000	0	215000	0.150	0.160	693000	0.000	0.000	0.160
SGX	S68	--	SGD	8.020	3209542	8.040	-0.040	8.000	400000	8.000	8.010	10000	12000	SGX
SIA	C6L	--	SGD	14.180	-0.100	-0.700	489000	3000	14.160	14.200	37000	14.260	14.140	14.280
SMRT	S53	--	SGD	1.830	+0.010	+0.550	432000	114000	1.820	1.830	508000	1.830	1.810	1.820
SPH	T39	--	SGD	3.560	-0.010	-0.280	632000	245000	3.550	3.560	42000	3.580	3.550	3.570

1

1. The prices displayed in the Stock Challenge are based on the actual one in Singapore Stock Exchange. Click on the Refresh button for the latest prices.

OCBC - Your Personal e-Broker - Microsoft Internet Explorer

Address: <http://www1.ocbc.com/index.html>

ig: HANG SENG INDEX: --(--)
 MSCI HK INDEX: --(--)
 Malaysia: KLSE 2ND BOARD: --(--)
 FTSE BURSA I
 Text size: A A A
 Fri, 18 Dec 2009
 Logout

MyPage | Speed Trade | Market Info | Trades | Portfolio | Account Mgmt | Share Financing | IPO | Calculator | Trading Simulator

Buy/Sell | Portfolio | Trade History | View Ranking | Top 20 Traded Counters

A B C D E F G H I J K L M N O P Q R S T U V W X Y Z 0-9 SGX

Last Retrieved on Fri Dec 18 10:15:04 CST 2009 from iOCBC server

Showing records 1 to 9 of 9

Stock	Code	Rmk	Ccy	Last	\$Chng	%Chng	Vol	Buy Vol	Buy	Sell	Sell Vol	Day Hi	Day Lo	Previous
1ST SOFTWARE	I16	--	SGD	0.000	0.000	0.000	0	0	0.000	0.000	0	0.000	0.000	0.000
ACHIEVA	A02	--	SGD	0.105	0.000	0.000	599000	2817000	0.105	0.110	3246000	0.105	0.105	0.105
DBS	D05	--	SGD	14.740	23091880	14.880	-0.160	14.560	1577000	14.700	14.720	19000	12000	DBS GRP HLDGS
OCBC BK	O39	--	SGD	8.700	6675767	8.700	-0.020	8.680	769000	8.670	8.680	17000	58000	OCBC
QIANHU	552	--	SGD	0.000	0.000	0.000	0	215000	0.150	0.160	693000	0.000	0.000	0.160
SGX	S68	--	SGD	8.020	3209542	8.040	-0.040	8.000	400000	8.000	8.010	10000	12000	SGX
SIA	C6L	--	SGD	14.180	-0.100	-0.700	489000	3000	14.160	14.200	37000	14.260	14.140	14.280
SMRT	S53	--	SGD	1.830	+0.010	+0.550	432000	114000	1.820	1.830	508000	1.830	1.810	1.820
SPH	T39	--	SGD	3.560	-0.010	-0.280	632000	245000	3.550	3.560	42000	3.580	3.550	3.570

1. Search for counter by clicking on the alphabets.
2. Alternatively, enter the counter name in the search box and click GO.
3. Click on the stock name to place your order

Note:

- (1) Each account is only allowed to place 30 buy/sell orders within the same trading day.
- (2) Each account will be assigned a short sell limit of S\$50,000 at the start of each trading day. Any short sell done will reduce this limit which will not be restored during the day.
- (3) Each counter can only be short sold once per day.

Trading A/C No	G000044	Buy Vol	8.68
Client Name	532365	Buy	770000
Stock Name	OCBC Bk	Sell Vol	8.68
Stock Code	039	Sell	8.670
Trade Ccy	SGD	Last	8.700
Cash Balance (S\$)	84,970	Short Sell Limit (S\$)	46,540

Action: Buy Sell

Qty:

Price:

Settlement Ccy: 8.680

Mode: Cash

Buy / Sell

1. Trading rules
2. Your available Cash Balance and Short Sell limit
3. Click on Buy or Sell
4. Enter your desired quantity
5. Price is based on Last Done (the last transacted price of the stock)
6. Click on Submit to confirm the order

IOCBC - Your Personal e-Broker - Microsoft Internet Explorer

Address: http://www1.iocbc.com/index.html

Hong Kong: HANG SENG INDEX: --(--)
 MSCI HK INDEX: --(--)
 Malaysia: KLSE 2ND BOARD: --(--)
 Text size: A A A Fri, 18 Dec 2009 Logout

MyPage | Speed Trade | Market Info | Trades | Portfolio | Account Mgmt | Share Financing | IPO | Calculator | Trading Simulator

Buy/Sell | Portfolio | Trade History | View Ranking | Top 20 Traded Counters

Refresh

CASH BALANCE: 84,970.00
 SHORT LIMIT : 46,540.00

Stocks (Cash)		Ccy	Net Quantity	Last	Stock Value
A02	Achieva	0.105	6,000	0.105	630.00
D05	DBS	14.720	1,000	14.740	14,740.00
S68	SGX	8.010	-10,000	8.020	-80,200.00
S53	SMRT	1.830	-2,000	1.830	-3,660.00
Total Stock value					SGD -68,490.00

Portfolio – To check your value of your current holdings

1. The average price of the stock that you have purchased. Net Quantity denotes the current number of shares that you hold.
2. Stock Value denotes the current value of the stock.
3. Your total value of your portfolio.

Organized By:



Supported By:



Sponsored By:



OCBC - Your Personal e-Broker - Microsoft Internet Explorer

Address: http://www1.ocbc.com/index.html

OCBC AND SET: --(--)
Others: ALL ORDINARIES: --(--)
DJ INDU AVERAGE: --(--)
KOSPI: --(--)
NAS/N: --(--)
Text size: A A A
Fri, 18 Dec 2009 Logout

MyPage | Speed Trade | Market Info | Trades | Portfolio | Account Mgmt | Share Financing | IPO | Calculator | Trading Simulator

Buy/Sell | Portfolio | **Trade History** | View Ranking | Top 20 Traded Counters

1 You can only view current day's orders. The trading records will be removed on the next market day at 8.00am. For example: Trade Date - 15 Jan, Removal Date - 16 Jan 8.00am
We strongly advise you to keep track of your trading records by following these 3 steps:

- 1) Highlight the current day's orders,
- 2) Copy,
- 3) Paste onto a word document or excel spreadsheet.

Kindly do so before the removal of records.

Today's Orders Refresh

Date	Mkt	Code	Stock	Trade Ccy	Price	Qty	Action	Mode	Amnt
2009-11-30 11:53:20	SGX	S53	SMRT	SGD	1.730	2,000	Sold	Cash	

Trade History – Displays your trading records for the day

1. You can only view the current day's trading record. It will be removed at 8am the following day.

Organized By:

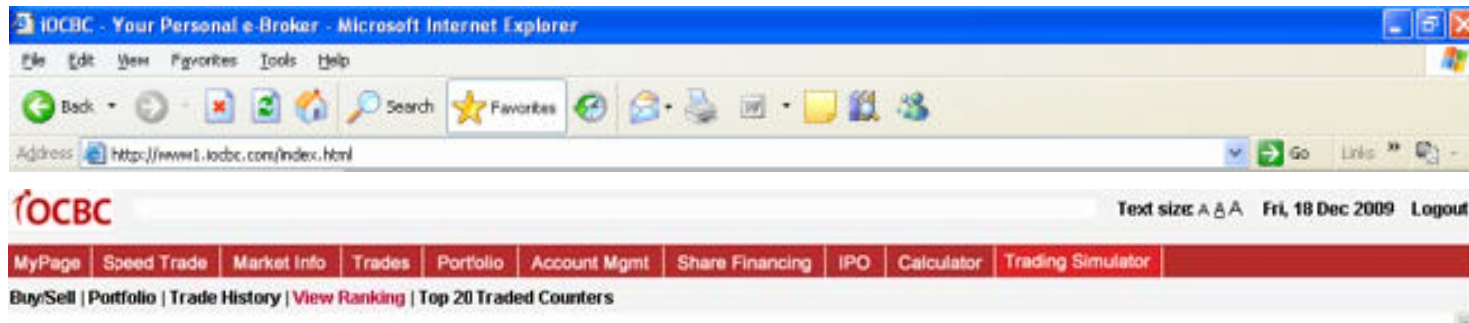


Supported By:



Sponsored By:





Top 50 Rankings for the day

Rank No.	Total Valuation
1	180380.00
2	167790.00
3	147900.00
4	113140.00
5	100000.00
6	100000.00
7	100000.00
8	100000.00
9	100000.00
10	100000.00
11	100000.00
12	100000.00
13	100000.00
14	60000.00

View Ranking

This page shows the current rankings for the Young Investors Stock Challenge 2010.

Organized By:



Supported By:



Sponsored By:



OCBC - Your Personal e-Broker - Microsoft Internet Explorer

Address: <http://www1.ocbc.com/index.html>

Regional Indices: ALL S'PORE INDEX: --(--)
STRAIT Text size: A A A Fri, 18 Dec 2009 Logout

MyPage Speed Trade Market Info Trades Portfolio Account Mgmt Share Financing IPO Calculator Trading Simulator

Buy/Sell | Portfolio | Trade History | View Ranking | [Top 20 Traded Counters](#)

Top 20 Traded Counters for 30 Nov 2009

No.	Code	Stock	Top Volume
1	S68	SGX	10,000
2	A02	Achieva	5,000
3	S53	SMRT	2,000
4	D05	DBS	1,000

Top 20 Traded Counters

This page shows the Top 20 traded counters for the day.

Organized By:



Supported By:



Sponsored By:



Important Notes

Young Investors Stock Challenge 2010 is a pseudo online trading game designed for the specific purposes of education and to give the participants a realistic feel in undertaking online securities trading. We emphasize that the results of this game is not a true reflection or indication of the actual stock market scene. The contents of the trading game are for your information only and may be taken or compiled from sources that OCBC Securities Private Limited ("OSPL") believes to be reliable. However, OSPL does not represent that this information is accurate, timely or complete and it should not be relied upon as such. OSPL does not guarantee the accuracy, usefulness or adequacy of the information provided. This does not constitute an offer to buy or sell or solicitation of an offer to buy or sell any security or financial instrument or to participate in any particular trading or investment strategy. OSPL is not soliciting any action based on this trading game. The game does not take into account the particular investment objectives, financial situations, or needs of individual investors. Investors may wish to. In the event that the investor chooses not to seek advice from financial advisers, he should consider whether securities trading are suitable for him. OSPL shall not be responsible for any losses or damage suffered on account of inaccuracies of whatever nature in the game or on account of any decision taken by any investor on the basis of the information contained in the game. You should not rely on this game as investment advice or as a recommendation to commence or undertake securities trading. No communication (written or oral) received from OSPL shall be deemed to be an assurance or guarantee as to the expected results of any securities trading performed or any investment products purchased.

Organized By:



Supported By:



Sponsored By:

